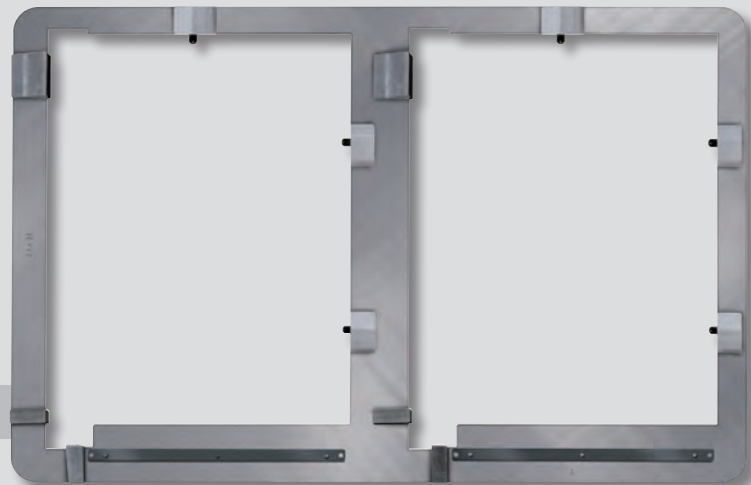
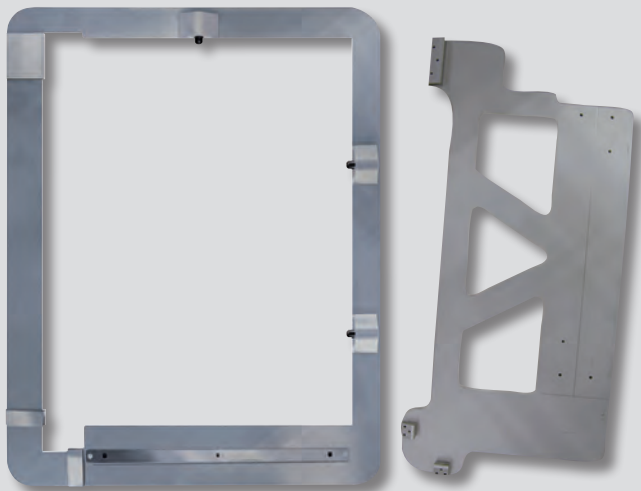


TRI-LOC® & DOUBLE TRI-LOC®



Rapid Screen Registration Systems



FEATURES

- Precise, repeatable registration from screen-to-screen
- Double Tri-Loc allows two synchronized screens to be exposed simultaneously
- Screens generated by M&R's CTS systems are automatically pre-registered for Tri-Loc

No other registration system for screen printing offers the accuracy and ease of use of M&R's revolutionary Tri-Loc and Double Tri-Loc Rapid Screen Registration Systems. It works flawlessly with conventional screen exposure systems, and it is the essential companion for M&R's i-Image Series computer-to-screen (CTS) imaging and imaging/exposure systems, which generate screens that are automatically pre-registered for Tri-Loc. The Tri-Loc system is easy to learn and simple to use and its return on investment may be faster than any product in the screen printing industry. And since the process is so easy to learn, almost any employee can be quickly trained to register screens. No longer does screen registration have to be left to the most skilled employees. Time-consuming multiple micro-registration adjustments and a seemingly endless run of test prints will be a thing of the past. Once screens have been exposed in register using the Master Registration Frame, users simply mount the Tri-Loc pallet to the press and move it to each printhead, pulling the screen frames into contact with the pallet at the three registration points. It's an amazingly easy process. See the simple steps on the back to find out just how fast and effortless screen registration can be.

Tri-Locs are compatible with all M&R screen printing presses, and can be used with wood frames, aluminum static frames, and roller frames. They're affordably priced, extremely cost effective, and have no moving critical registration points to wear out. Tri-Locs employ precision-milled registration points to ensure that operators can precisely match the registration on the screen exposure unit with the registration on the screen

printing press. Double Tri-Loc is M&R's twin-screen version. Screens properly exposed on one side of the Double Tri-Loc will be in sync with screens exposed on the other side, dramatically reducing the time devoted to exposing screens. And by combining one of NuArc's large screen exposure systems with the Double Tri-Loc Screen Registration System, operators can burn two same-size screens at once.

Master screen registration frames, available in numerous adjustable and fixed sizes, fit most popular screen frame sizes. Custom sizes are also available. Cost-effective and easy to use, Tri-Loc Screen Registration Systems can reduce setup time by as much as 95 percent. Unprecedented simplicity and unsurpassed accuracy make Tri-Loc and Double Tri-Loc Rapid Screen Registration Systems the ideal choice for screen printers who refuse to compromise on quality—and don't have time to waste.

Tri-Loc for CTS (Computer-to-Screen) Imaging Systems

The benefits for users of M&R's i-Image Series computer-to-screen (CTS) imaging and imaging-exposure systems are even greater. Since every CTS-generated screen is automatically pre-registered for M&R's Tri-Loc registration system, on-press registration is blazingly fast. In fact, owners report imaging and exposing screens in as little as 40 seconds—and washed out and registered on the press with Tri-Loc in less than 8 minutes! Users simply mount the Tri-Loc pallet to the press and move it to each printhead, pulling the screen frames into contact with the pallet at the three registration points. Nothing could be easier.

www.mrprint.com
store.mrprint.com

TRI-LOC® & DOUBLE TRI-LOC®

STANDARD FEATURES

MASTER EXPOSURE REGISTRATION FRAMES

- CTS Tri-Loc: Master Frame not required
- Double Tri-Loc: Non-adjustable
- Tri-Loc: Adjustable or non-adjustable

REGISTRATION PALLET

- On-press registration pallets are available in a variety of sizes

STARTUP KIT

- Contains two pin bars and 100 pre-punched carrier sheets

STOP BLOCK

- For accurate positioning of Tri-Loc pallets

VIDEO TRAINING

- Instructional DVD covers procedures for exposure and screen setup, and includes a tips & troubleshooting section

OPTIONS

CUSTOM SIZES

- Contact M&R for details

PIN BARS

- Additional bars

PRE-PUNCHED CARRIER SHEETS

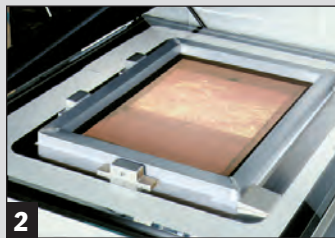
- Available in various sizes

STOP BLOCKS

- Additional blocks for multiple press use

STANDARD REGISTRATION PROCESS

1. Mount the Tri-Loc Master Registration Frame directly on the exposure unit. Next mount a carrier sheet to the pin bar and align a film positive, then attach the positive to the carrier sheet. Repeat the process for each film positive.



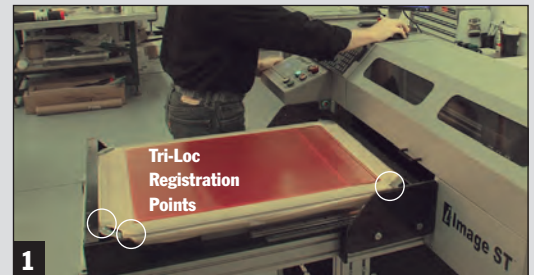
2. Insert the screen frame into the Tri-Loc Master Registration Frame. Pusher pins ensure that the screen is pushed securely up against the three registration points, and the Tri-Loc system keeps the screen and film precisely and tightly locked into position during vacuum pull-down.



3. Mount the lightweight Tri-Loc pallet on the press. The registration pallet's three registration points precisely duplicate the registration points on the Master Registration Frame.

4. Move the registration pallet into position, pull the screen into contact with the pallet's three registration points, and lock it in place. Repeat the process for all screen frames.

CTS REGISTRATION PROCESS



1. Since every CTS-generated screen is automatically pre-registered for Tri-Loc by mimicking the three fixed registration points of the Tri-Loc System, the computer-to-screen (CTS) registration process is even easier.

2. Mount the lightweight Tri-Loc pallet on the press. Then pull the screen frame into contact with the pallet's three registration points and lock it in place. Repeat the process for all screen frames.



SPECIFICATIONS

	Tri-Loc Non-Adjustable Master Frame					Tri-Loc Semi-Adjustable Master Frame (Length only)	Tri-Loc Adjustable Master Frame (Width & Length)	Double Tri-Loc Non-Adjustable Master Frame				Diamondback C Tri-Loc
Part Number	EXREG-20X24	EXREG-23X31	EXREG-23X33	EXREG-25X33	EXREG-25X36	ADJEXREG 25X33-36	ADJEXREG 23-25X31-36	EXREG-D-23X31	EXREG-D-23X33	EXREG-D-25X33	EXREG-D-25X36	EXREG-21x28
Footprint ¹	62.87 x 73.03 cm (24.75" x 28.75")	71.12 x 91.44 cm (28" x 36")	71.12 x 96.52 cm (28" x 38")	76.20 x 96.52 cm (30" x 38")	76.20 x 104.14 cm (30" x 41")	76.20 x 121.29 cm (30" x 47.75")	90.81 x 126.37 cm (35.75" x 49.75")	92.71 x 143.51 cm (36.5" x 56.5")	97.79 x 143.51 cm (38.5" x 56.5")	97.79 x 153.67 cm (38.5" x 60.5")	105.41 x 153.67 cm (41.5" x 60.5")	65 x 83 cm (25.75" x 32.75")
Screen Frame Size	50.80 x 61.96 cm (20" x 24")	58.42 x 78.74 cm (23" x 31")	58.42 x 83.82 cm (23" x 33")	63.50 x 83.82 cm (25" x 33")	63.50 x 91.44 cm (25" x 36")	63.50 x 83.82 cm (25" x 33") UP TO 63.50 x 91.44 cm (25" x 36")	58.42 x 78.74 cm (23" x 31") UP TO 63.50 x 91.44 cm (25" x 36")	58.42 x 78.74 cm (23" x 31")	58.42 x 83.82 cm (23" x 33")	63.50 x 83.82 cm (25" x 33")	63.50 x 91.44 cm (25" x 36")	53 x 71 cm (21" x 28")

¹ Space required on exposing unit



The M&R Companies
M&R • NUARC • AMSCOMATIC

M&R Sales and Service, Inc. 440 Medinah Road, Roselle, Illinois 60172-2329 USA

USA: 800-736-6431 / 630-858-6101 • Outside USA: +1-847-967-4461 • FAX: 630-858-6134

M&R Printing Equipment, Inc. and its subsidiaries (hereinafter M&R), believe the information in this advertisement to be accurate at publication, though it does not purport to list all manufacturing and specification variations, nor does it assume liability resulting from incompleteness or inaccuracy. M&R reserves the right to change specifications without notice. M&R expressly disclaims any liability for damages, consequential or incidental, from purchase, installation, servicing, and/or use of any product/service based upon information herein. No warranties of merchantability or fitness for a particular purpose are made or are to be implied from the information herein. No information herein may be reproduced or used in any manner without the prior, express written consent of M&R in each case. Copyright 2016 M&R Printing Equipment, Inc. All rights reserved. 20160622