

# NOVUS TEXTURA® 1800

Automatic Dye Sublimation Printer



Textura 1800 is designed for unattended roll-to-roll high-speed transfer dye-sublimation printing. It's capable of printing four-color CMYK and true greyscale at resolutions up to 1200 dpi. Textura 1800 can manage substrates 1.8 meters (70") wide at high-productivity speeds up to 140 square meters (1500 square feet) per hour and at sustained production speeds up to 120 square meters (1300 square feet) per hour. It employs variable-drop printing using water-based dye-sublimation inks for exceptional image quality and bold, vibrant colors. Novus dye-sublimation inks are made in the United States and designed for low cost per print.

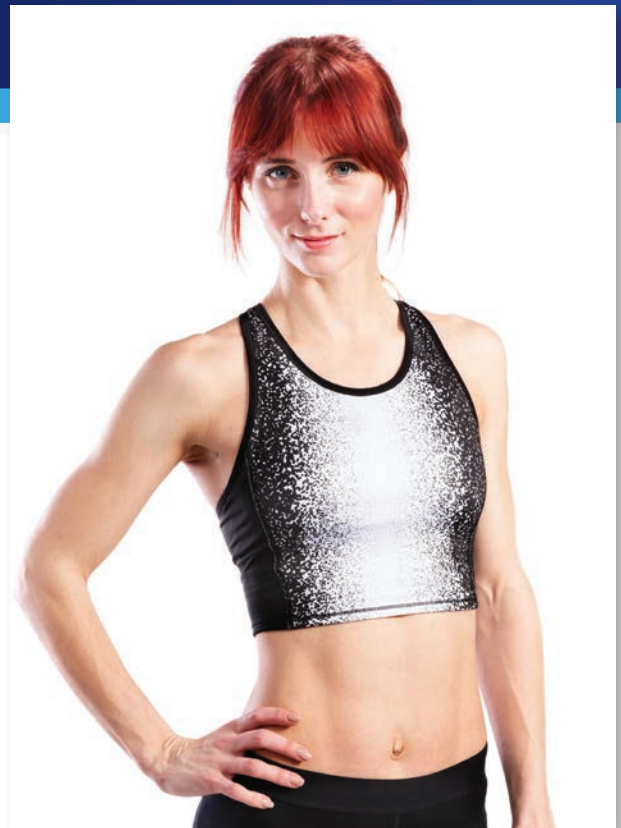
Textura 1800 can print individual image art and seamless patterns at full width and any length. The robust material feed design allows virtually wrinkle-free printing without the need for operator supervision. The system supports printing on a wide range of heavy and thin papers, allowing flexibility on a variety of applications. Batch-queueing allows the system to be loaded with files for unattended non-stop printing of unrelated jobs.

Textura 1800 incorporates an anti-crash printhead carriage with a self-cleaning, self-wiping system. Textura includes an integrated unwind/rewind mechanism designed to hold jumbo-size paper rolls up to 200 kg (440 pounds), and its industrial media-handling system allows long print runs to proceed unattended. A multi-section heating system provides exceptional drying capacity on all substrate thicknesses. Independent top, front, and bottom dryers are individually controlled to ensure dry paper at high speeds.

Dye-sublimation transfer is the optimal choice for customizing polyester apparel, sportswear fabrics, cut-and-sew yardage fabrics, bags, and T-shirts, and M&R's Novus Textura 1800 sets a new standard for price, performance, and low ink costs.

# SPECIFICATIONS

|                               |   |
|-------------------------------|---|
| <b>Printheads:</b>            | Kyocera x 2                                       |
| <b>Resolution:</b>            | up to 1200 dpi                                    |
| <b>Production-Mode Speed:</b> | 130 m <sup>2</sup> /hr (1399 ft <sup>2</sup> /hr) |
| <b>Up-To Print Speed:</b>     | 140 m <sup>2</sup> /hr (1507 ft <sup>2</sup> /hr) |
| <b>Printer Footprint:</b>     | 428 x 156 x 157 cm (168" x 61.4" x 61.8")         |
| <b>Crated Dimensions:</b>     | 414 x 160 x 190 cm (163" x 63" x 74.6")           |
| <b>Printer Weight:</b>        | 1200 kg (2645 lb)                                 |
| <b>Dryer Weight:</b>          | 100 kg (220 lb)                                   |
| <b>Maximum Roll Diameter:</b> | 400 mm (15")                                      |
| <b>Maximum Roll Weight:</b>   | 200 kg (440 lb)                                   |
| <b>Dryer Cure Source:</b>     | Infrared panels and forced air                    |
| <b>Power:</b>                 | 220 V, 60 A                                       |
| <b>Compressed Air:</b>        | 6 bar (8.7 psi)                                   |
| <b>Operating Temperature:</b> | 22° - 28° C (71° - 82° F)                         |
| <b>Humidity:</b>              | 40% - 80%   |
| <b>Work-Area Allocation:</b>  | 6 m x 4 m (20' x 13')                             |
| <b>RIP Software:</b>          | Ergosoft, Caldera                                 |



\* Speeds were measured using industry standard speed measurements.  
 \*\* Warranty: One-year limited on parts and labor, excluding wear items and consumables. See Warranty Statement for full details.



**NOVUS** Imaging  
 AN M&R COMPANY

[WWW.NOVUSIMAGING.COM](http://WWW.NOVUSIMAGING.COM)

**440 Medinah Road, Roselle, Illinois 60172-2329 USA TOLL FREE: 800-736-6431**  
**USA: 630-858-6101 Outside USA: +1-847-967-4461 FAX: 630-858-6134**

M&R Printing Equipment, Inc. and its subsidiaries (hereinafter M&R), believe the information in this advertisement to be accurate at publication, though it does not purport to list all manufacturing and specification variations, nor does it assume liability resulting from incompleteness or inaccuracy. M&R reserves the right to change specifications without notice. M&R expressly disclaims any liability for damages, consequential or incidental, from purchase, installation, servicing, and/or use of any product/service based upon information herein. No warranties of merchantability or fitness for a particular purpose are made or are to be implied from the information herein. No information herein may be reproduced or used in any manner without the prior, express written consent of M&R in each case. Copyright 2017 M&R Printing Equipment, Inc. All rights reserved. 20171003