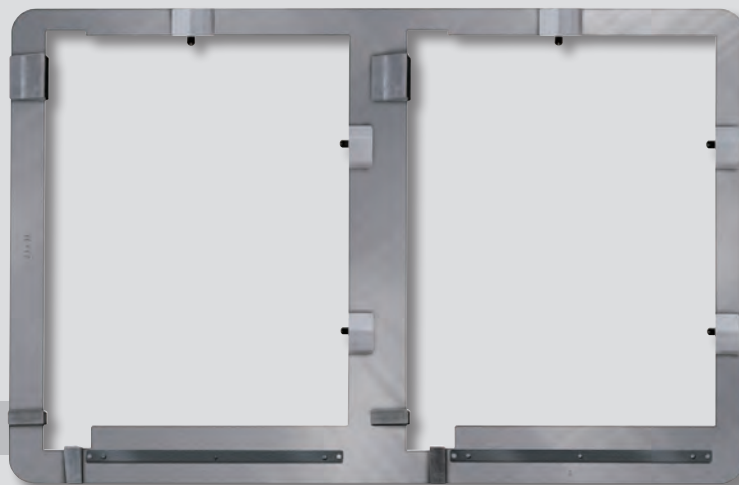
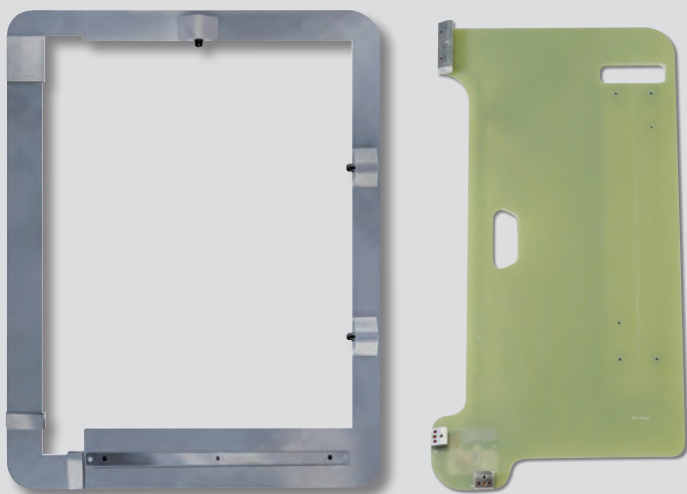


TRI-LOC® & DOUBLE TRI-LOC®



Registration System for Film-Based Screen Production



FEATURES

- Precise, repeatable registration from screen-to-screen
- Simple to set up and use, with sizes to fit most textile screen frames
- Double Tri-Loc allows two synchronized screens to be exposed simultaneously

No other registration system for screen printing offers the accuracy and ease of use of M&R's revolutionary Tri-Loc® and Double Tri-Loc® Rapid Screen Registration Systems. Tri-Loc works flawlessly with conventional screen exposure systems, and it is the essential companion for M&R's i-Image Series computer-to-screen (CTS) imaging and imaging/exposure systems, which generate screens that are automatically pre-registered for Tri-Loc. The Tri-Loc system is easy to learn and simple to use—and its return on investment may be faster than any product in the screen printing industry.

And since the process is so easy to learn, almost any employee can be quickly trained to register screens. No longer does screen registration have to be left to the most skilled employees. Time-consuming multiple micro-registration adjustments and a seemingly endless run of test prints will be a thing of the past. Once screens have been exposed in register using the Master Registration Frame, users simply mount M&R's Tri-Sync™ Pallet (U.S. Patent Pending) to the press and move it to each printhead, pulling the screen frames into contact with the pallet at the three registration points. Tri-Sync takes the guesswork out of metal screen frame placement by using LEDs to let users know when screen frames are properly registered on the press, virtually eliminating screen-loading errors. It's an amazingly easy process. (An aluminum Tri-Loc Pallet is optionally available.)

Tri-Sync Pallets are compatible with all M&R screen printing presses, and can be used with aluminum static frames, roller frames, and wood frames

(Tri-Sync's LED system does not work with non-conductive screen frame materials). They're affordably priced, extremely cost effective, and have no moving critical registration points to wear out. The Tri-Loc System employs precision-milled registration points to ensure that operators can precisely match the registration on the screen exposure unit with the registration on the screen printing press. Double Tri-Loc is M&R's twin-screen version. Screens properly exposed on one side of the Double Tri-Loc will be in sync with screens exposed on the other side, dramatically reducing the time devoted to exposing screens. And by combining one of M&R's large screen exposure systems with the Double Tri-Loc Screen Registration System, operators can burn two same-size screens at once.

Master screen registration frames, available in numerous adjustable and fixed sizes, fit most popular screen frame sizes. Custom sizes are also available. Cost-effective and easy to use, Tri-Loc Screen Registration Systems can reduce setup time by as much as 95 percent. Unprecedented simplicity and unsurpassed accuracy make Tri-Loc and Double Tri-Loc Rapid Screen Registration Systems the ideal choice for screen printers who refuse to compromise on quality—and don't have time to waste.

Tri-Loc Video Training

M&R supports new Tri-Loc owners with online video training. Tri-Loc owners who use film can watch online video of the setup process at www.mrprint.com/triloc-all.

www.mrprint.com
store.mrprint.com

TRI-LOC® & DOUBLE TRI-LOC®

STANDARD FEATURES

MASTER EXPOSURE REGISTRATION FRAMES

- Double Tri-Loc: Non-adjustable
- Tri-Loc: Adjustable or non-adjustable

STARTUP KIT

- Contains two pin bars and 100 pre-punched carrier sheets

STOP BLOCKS

- For accurate positioning of Tri-Loc pallets

TRI-SYNC REGISTRATION PALLET

- LEDs confirm proper screen placement prior to screen frame lockdown
- Powered by two coin-size batteries with an estimated life of six months or more

VIDEO TRAINING

- Instructional DVD covers procedures for exposure and screen setup, and includes a tips & troubleshooting section

OPTIONS

CUSTOM SIZES

- Contact M&R for details

PIN BARS

- Additional bars

PRE-PUNCHED CARRIER SHEETS

- Available in various sizes

REGISTRATION PALLET

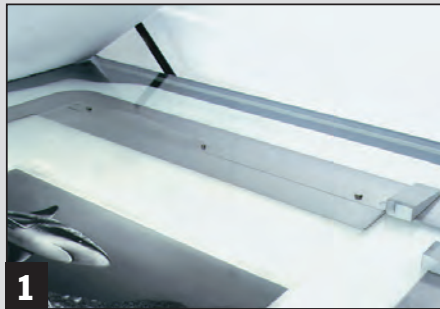
- Aluminum registration pallet

STOP BLOCKS

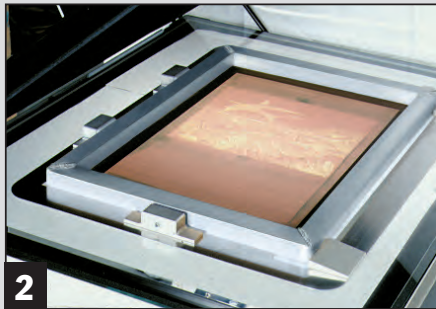
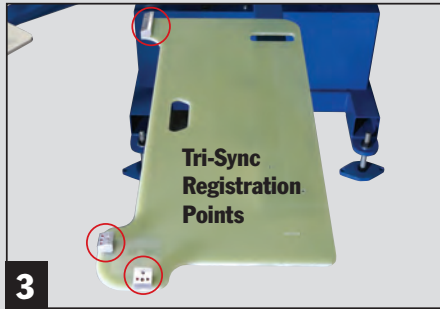
- Additional blocks for multiple press use

REGISTRATION PROCESS FOR FILM-BASED SCREEN PRODUCTION

1. Mount the Tri-Loc Master Registration Frame directly on the exposure unit. Next mount a carrier sheet to the pin bar and align a film positive, then attach the positive to the carrier sheet. Repeat the process for each film positive.



3. Mount the lightweight Tri-Sync pallet on the press. The registration pallet's three registration points precisely duplicate the registration points on the Master Registration Frame.



2. Insert the screen frame into the Tri-Loc Master Registration Frame. Pusher pins ensure that the screen is pushed securely up against the three registration points, and the Tri-Loc system keeps the screen and film precisely and tightly locked into position during vacuum pull-down.



4. Move the registration pallet into position, pull the screen into contact with the pallet's three registration points, and lock it in place. Repeat the process for all screen frames.

SPECIFICATIONS

	Tri-Loc Non-Adjustable Master Frame					Tri-Loc Semi-Adjustable Master Frame (Length only)	Tri-Loc Adjustable Master Frame (Width & Length)	Double Tri-Loc Non-Adjustable Master Frame				Diamondback C Tri-Loc
Part Number	EXREG-20X24	EXREG-23X31	EXREG-23X33	EXREG-25X33	EXREG-25X36	ADJEXREG 25X33-36	ADJEXREG 23-25X31-36	EXREG-D-23X31	EXREG-D-23X33	EXREG-D-25X33	EXREG-D-25X36	EXREG-21x28
Footprint ¹	62.87 x 73.03 cm (24.75" x 28.75")	71.12 x 91.44 cm (28" x 36")	71.12 x 96.52 cm (28" x 38")	76.20 x 96.52 cm (30" x 38")	76.20 x 104.14 cm (30" x 41")	76.20 x 121.29 cm (30" x 47.75")	90.81 x 126.37 cm (35.75" x 49.75")	92.71 x 143.51 cm (36.5" x 56.5")	97.79 x 143.51 cm (38.5" x 56.5")	97.79 x 153.67 cm (38.5" x 60.5")	105.41 x 153.67 cm (41.5" x 60.5")	65 x 83 cm (25.75" x 32.75")
Screen Frame Size	50.80 x 61.96 cm (20" x 24")	58.42 x 78.74 cm (23" x 31")	58.42 x 83.82 cm (23" x 33")	63.50 x 83.82 cm (25" x 33")	63.50 x 91.44 cm (25" x 36")	63.50 x 83.82 cm (25" x 33") UP TO 63.50 x 91.44 cm (25" x 36")	58.42 x 78.74 cm (23" x 31") UP TO 63.50 x 91.44 cm (25" x 36")	58.42 x 78.74 cm (23" x 31")	58.42 x 83.82 cm (23" x 33")	63.50 x 83.82 cm (25" x 33")	63.50 x 91.44 cm (25" x 36")	53 x 71 cm (21" x 28")

¹ Space required on exposing unit



The M&R Companies

M&R Sales and Service, Inc. 440 Medinah Road, Roselle, Illinois 60172-2329 USA

USA: 800-736-6431 / 630-858-6101 • Outside USA: +1-847-967-4461 • FAX: 630-858-6134

M&R Printing Equipment, Inc. and its subsidiaries (hereinafter M&R), believe the information in this advertisement to be accurate at publication, though it does not purport to list all manufacturing and specification variations, nor does it assume liability resulting from incompleteness or inaccuracy. M&R reserves the right to change specifications without notice. M&R expressly disclaims any liability for damages, consequential or incidental, from purchase, installation, servicing, and/or use of any product/service based upon information herein. No warranties of merchantability or fitness for a particular purpose are made or are to be implied from the information herein. No information herein may be reproduced or used in any manner without the prior, express written consent of M&R in each case. Copyright 2017 M&R Printing Equipment, Inc. All rights reserved. 20170327P